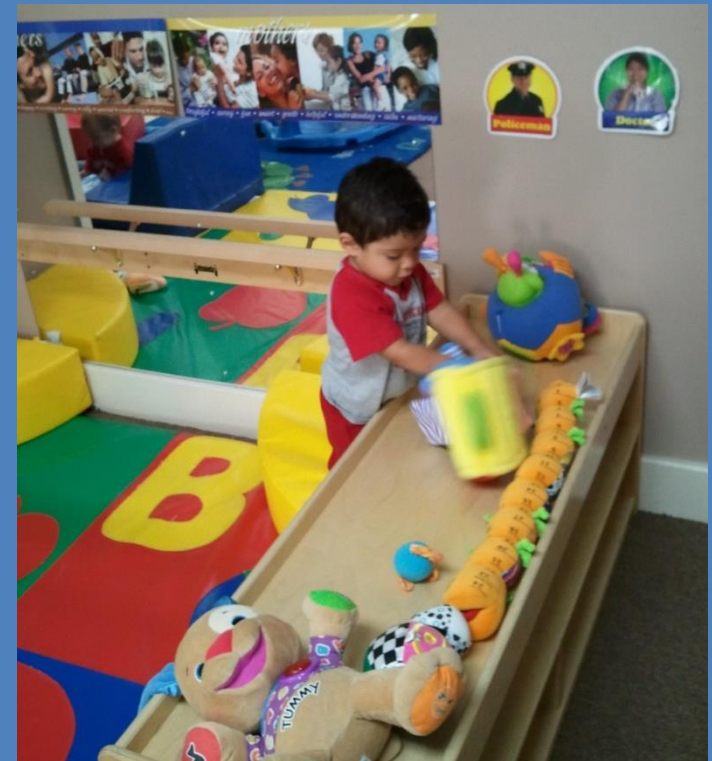


2013-2014

Annual Report—Children's Services



1909 Central Parkway SW  
Decatur, AL 35601  
[www.capna.org](http://www.capna.org)

**Community Action Partnership of North Alabama  
Annual Report  
2013-2014**

**2013-2014: An Overview**

Community Action Partnership of North Alabama's Children's Services Department has experienced significant growth during a year following a government induced sequestration in which we had to close 11 classrooms and lay-off over 20 employees, mostly teachers.

In June 2013, we were awarded through competition the opportunity to serve 432 preschool children in 24 classrooms in two new service area Madison and Limestone counties for a total of 1978 children served in 14 counties. The company hired over 60 new employees and provided intensive pre-service training during August 2013 in time for classrooms to open for the school year. "The paint was still wet" when we received a call in early October 2013 from the Florence City Superintendent and the Office of Head Start asking if our company could serve 281 additional children in Lauderdale county as the interim grantee. Oh Yes, we did!!! The children and their families at the WC Handy Head Start Center in Florence never missed a day of service.

We have implemented several new initiatives throughout the year such as, We Care Healthy Child program was established to decrease the number of emergency room visits through training, School Readiness Cluster meetings with local education agencies, Summer Health Fairs, Resource Fairs, Teacher

Mentor Coaching, and Parents As Teachers (PAT)-Home Visitation program.

In May 2014, we received two notifications of award as the permanent grantee for Lauderdale County and to serve 56 infants and toddlers in Early Head Start in Madison and Limestone counties bringing our total enrollment to 2,770 children served in 15 counties (2,710 of those are Head Start children and 60 are in the PAT program). In addition, we were awarded four Alabama Pre-K classrooms to bring that total to 22 in our service area.



**Community Action Partnership of North Alabama  
Annual Report  
2013-2014**

**Who We Are**

***Our Vision***

As a comprehensive business to be a premiere and preferred service partner creating a better community.

***Our Mission***

The Community Action Partnership of North Alabama, a results-driven, non-profit business is committed to reducing or eliminating the causes and consequences of poverty for families and communities.

***Our Values***

Financial Excellence  
Exceptional Customer Service  
Accountability  
Compassion

***Our People's Values***

Innovative  
Leaders of Change  
Effective Communicators  
Engaged in the Community

***Communities We Serve***

Morgan, Lawrence, Cullman, Franklin, Colbert, Cherokee, DeKalb, Jackson, Marshall, Blount, Marion, Winston, Madison, Limestone, Lauderdale (Interim) and Walker (Weatherization Services only) Counties in North Alabama

**Board of Directors**

The Partnership's Board of Directors membership meets all mandates set forth by the Head Start Performance Standards and the Head Start Reauthorization Act of 2007. 2013-2014 Members are listed below.

**Public Sector**

- Allen Stover
- Sheryl Marsh
- Paul Lott
- Bruce Gordon
- Earlene Johnson
- Jennifer Butler-Taylor

**Community Sector**

- Leigh Frances
- Cassandra Lee
- Christine Garner
- Pat Gilbert
- Lorri Lee
- Matt Holmes
- Cleo McDaniel

**Private Sector**

- Darris Frost (Board Chair)
- Mike Bates
- Jim Turner
- Jenny Clark

Chief Executive Officer: Michael Tubbs

Director of Children's Services: Kim H. Dodd

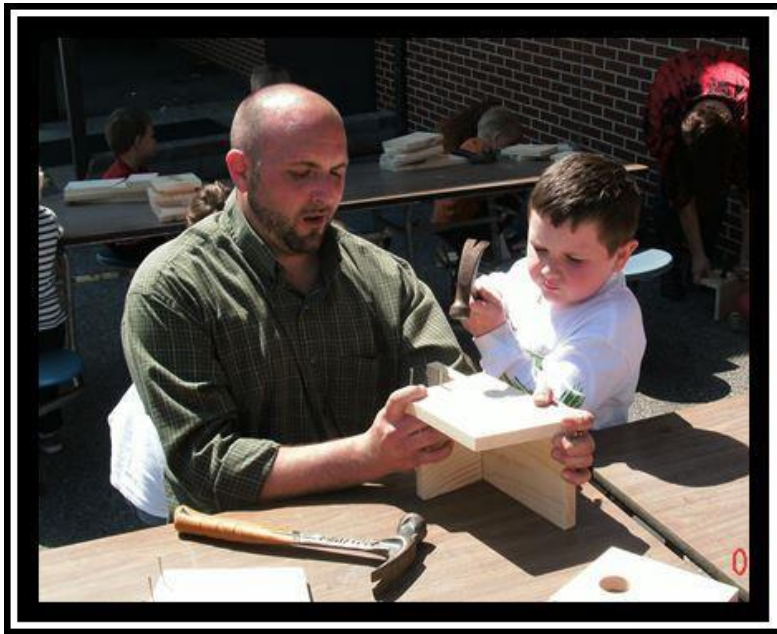
**Community Action Partnership of North Alabama  
Annual Report  
2013-2014**

**ENROLLMENT for Preschool Head Start** was maintained at 100% from August 2013 through May 2014. The total number of actual children served was 2,569. Of the actual enrollment, income percentages are as follows:

- 2,314 of the 2,569 were in the 0-100% poverty category (90%)
- 255 of the 2,569 were in the over 130% of poverty category (10%)

**ENROLLMENT for Early Head Start** was maintained at 100% from August 2013 through June 2014. The total number of *actual* children/pregnant mothers enrolled was 102. Of the actual enrollment, income percentages are as follows:

- 101 of the 102 were in the 0-100% of poverty category (99%)
- 1 of the 102 were in the over 130% of poverty category (1%)



### **Medical and Dental Exams**

Children Receiving Medical Exams – Head Start – 1,903 (83%)

Children Receiving Dental Exams – Head Start – 1,887 (84%)

Children Receiving Medical Exams – Early Head Start – 91 (93%)

Children who are up-to-date on oral care-Early Head Start- 82 (84%)

### **Parent Involvement Activities**

Our program utilizes and implements indicators outlined in the Parent, Family and Community Engagement Framework. We focus on building relationships with families that support their well-being through activities that engage parents and families in their child's education.

Our Early Head Start families are provided opportunities to learn about expectant parenting and prenatal health through the Baby Basics curriculum. Information is shared during home visits and conferences. Fatherhood and male role-modeling are promoted throughout the program using a variety of strategies and activities.

Throughout the 2013-2014 program year, parents in our program had various opportunities to participate through:

- Policy Council and Governing Board
- Monthly Parent Committee Meetings
- Monthly Parent Classroom Activities
- Parent/Teacher Conferences
- Take Home Activities
- Workshops and Trainings
- Home Visits

**Community Action Partnership of North Alabama  
Annual Report  
2013-2014**

- Alabama Public Television Parent Meeting
- Employment Services
- County Cooperative Extension Meetings

**Review Findings and Annual Audit Results**

The Partnership Head Start’s most recent Office of Head Start program review was conducted in March 2012. The results of the review identified five areas of concern: contracting or hiring a Mental Health Professional, follow-up by a Mental Health Professional; system for maintenance and repair of equipment; annual report; criminal record check prior to hire. A plan was developed and implemented to clear all non-compliances. Reviewers also identified program strengths such as dental follow-up, dental partnerships, and onsite dental visits and FDC classes for 13 Family Service Managers.

The Community Action Partnership of North Alabama’s audit for the 2013 fiscal year had no findings or questioned costs in the company or Head Start Program. Our organization continually strives to maintain financial excellence. The 2013 program year was our 47th year to operate the Head Start program with clean audits.

**School Readiness**

Head Start staff is committed to making the transition from Head Start to Kindergarten as successful as possible. In order to facilitate this transition, teachers use the Creative Curriculum in their classrooms. This curriculum aligns with the Head Start Framework, the program’s school readiness goals, and our child assessment program—Teaching Strategies GOLD. This curriculum provides tools

to allow teachers to individualize lessons to each child, ensuring that each child is being appropriately challenged, which will in turn, allow each child to learn to his or her fullest potential.

We also maintain open communication and cooperation with parents, early intervention programs, and the local school districts. Parents and school districts are also invited to be involved in the decision making process around the program’s school readiness goals.

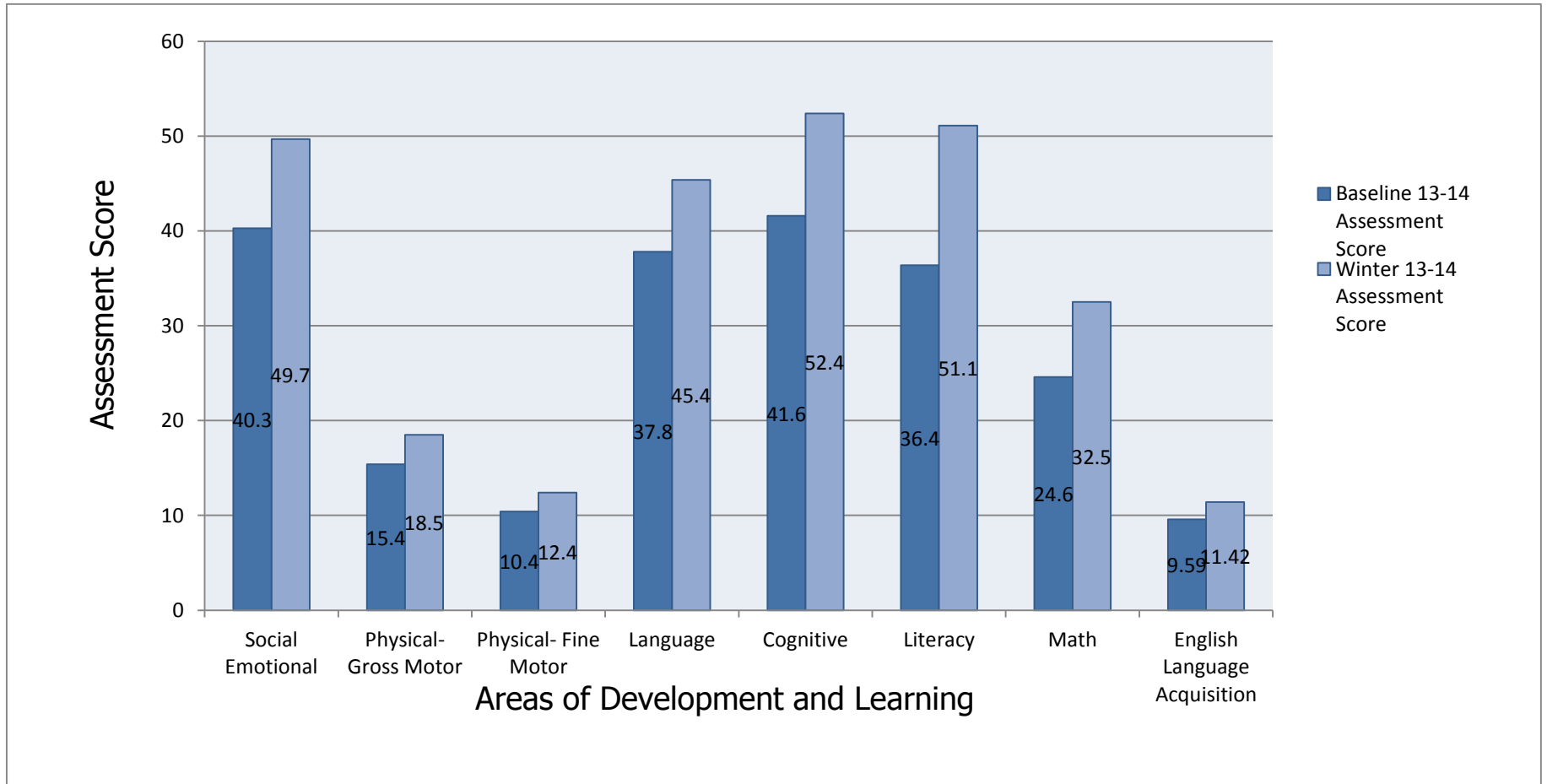
Parents are encouraged to be fully involved in the transition process between Head Start and Kindergarten. Teachers conduct two home visits a year, where a parent’s educational goals for a child can be made and assessed. Teachers also share information on an individual child’s progress through the year with parents in conferences and home visits. Parents are encouraged to attend the kindergarten transition meetings, and are provided with information pertaining to kindergarten registration and orientation.



**Community Action Partnership of North Alabama  
Annual Report  
2013-2014**

**2013-2014 Child Outcomes Report for 4yr Olds**

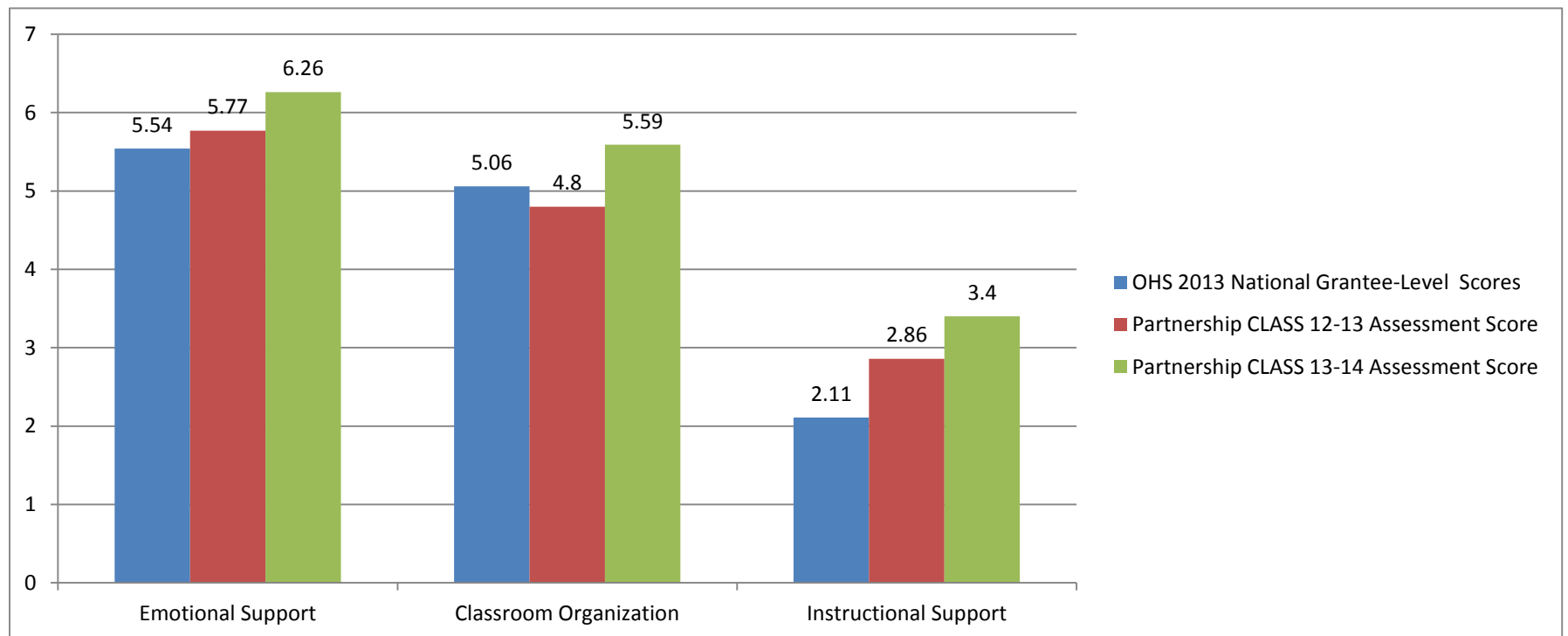
	Social Emotional	Physical-Gross Motor	Physical-Fine Motor	Language	Cognitive	Literacy	Math	English Language Acquisition
Baseline 13-14 Assessment Score	40.3	15.4	10.4	37.8	41.6	36.4	24.6	9.59
Winter 13-14 Assessment Score	49.7	18.5	12.4	45.4	52.4	51.1	32.5	11.42
Gains %	23.3%	20.1%	19.2%	20.1%	26.0%	40.4%	32.1%	19.1%



**Community Action Partnership of North Alabama  
Annual Report  
2013-2014**

## CLASS Summary Report 2013-2014

	Emotional Support	Classroom Organization	Instructional Support
OHS 2013 National Grantee-Level Scores	5.54	5.06	2.11
Partnership CLASS 12-13 Assessment Score	5.77	4.8	2.86
Partnership CLASS 13-14 Assessment Score	6.26	5.59	3.4





**Community Action Partnership of North Alabama  
Annual Report  
2013-2014**

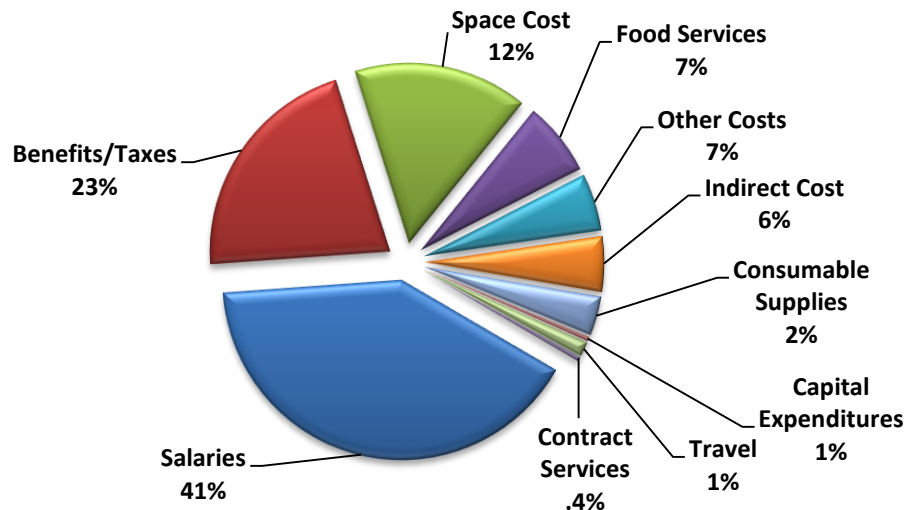
**Head Start 2013-2014 Program Year**

**Revenue**

	<b>Grant 04CH4655</b>	<b>Grant 04CH4646</b>	<b>Total</b>
Dept. of HHS	\$12,594,880	\$2,506,264	\$15,101,144
USDA	975,186	205,587	1,180,773
Local Contributions	3,128,720	637,675	3,766,395
St of AL Pre-K	710,685	-	710,685
Other Income	-	5,856	5,856
<b>Total Revenue</b>	<b>\$17,409,471</b>	<b>\$3,355,382</b>	<b>\$20,764,853</b>

**Expenditures**

Salaries	\$ 7,549,559	\$ 866,786	\$ 8,416,345
Benefits/Taxes	3,935,463	477,385	4,412,848
Space Cost	2,436,469	831,517	3,267,986
Food Services	1,136,017	249,440	1,385,457
Other Costs	834,669	240,005	1,074,674
Indirect Cost	904,013	118,322	1,022,335
Consumable Supplies	216,224	519,802	736,026
Capital Expenditures	81,941	-	81,941
Travel	243,228	36,143	279,371
Contract Services	71,888	15,982	87,870
<b>Total Expenditures</b>	<b>\$17,409,471</b>	<b>\$3,355,382</b>	<b>\$20,764,853</b>



**Grant 04CH4655** covers the following counties in North Alabama: Morgan, Lawrence, Cullman, Blount, Marion, Winston, Colbert, Franklin, Marshall, Jackson, DeKalb, and Cherokee.

**Grant 04CH4646** covers Preschool Madison and Limestone counties.

The Community Action Partnership of North Alabama had no findings or questioned costs in the FY 2013 audit.